



Hydro Forecasting Model

20/04/2024

Alessandro Calvi – D&E Hydro

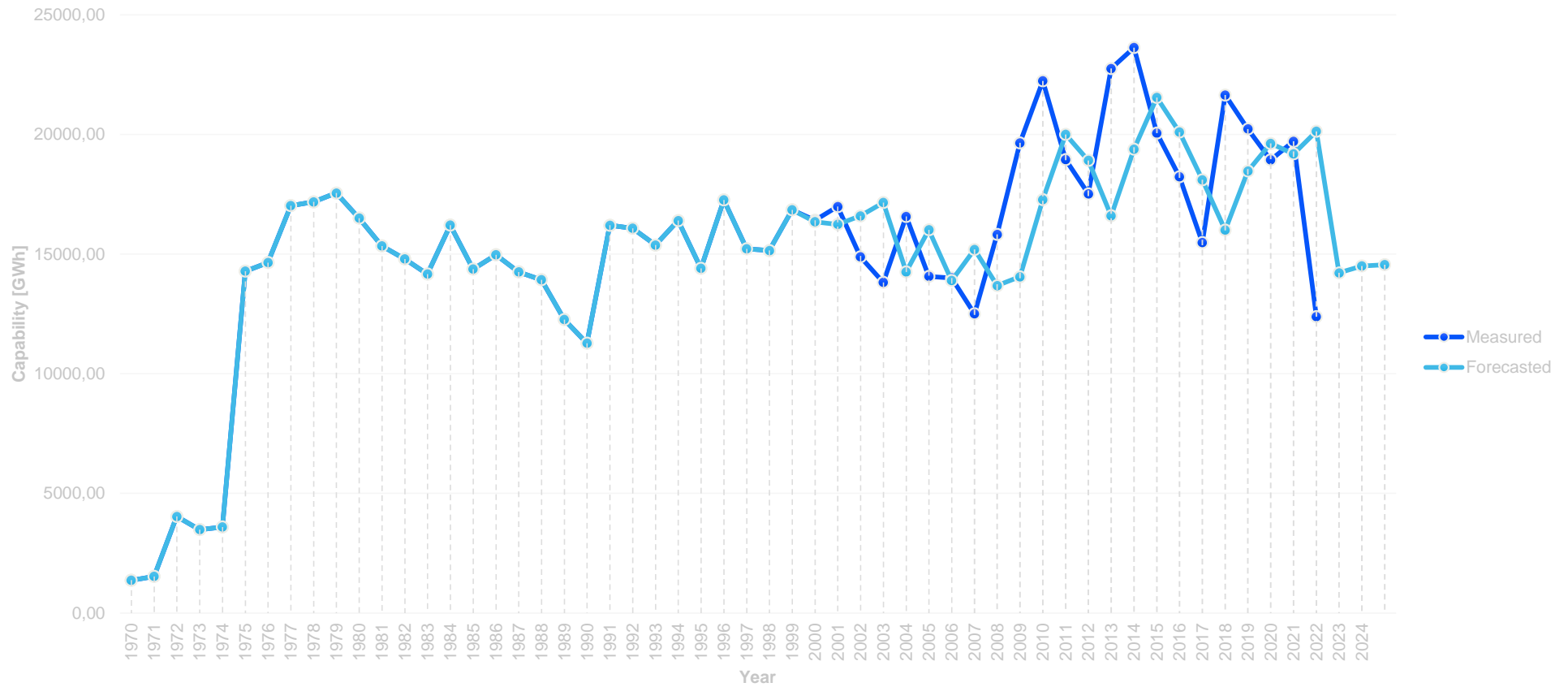


Focus – Hydro Forecasting Model

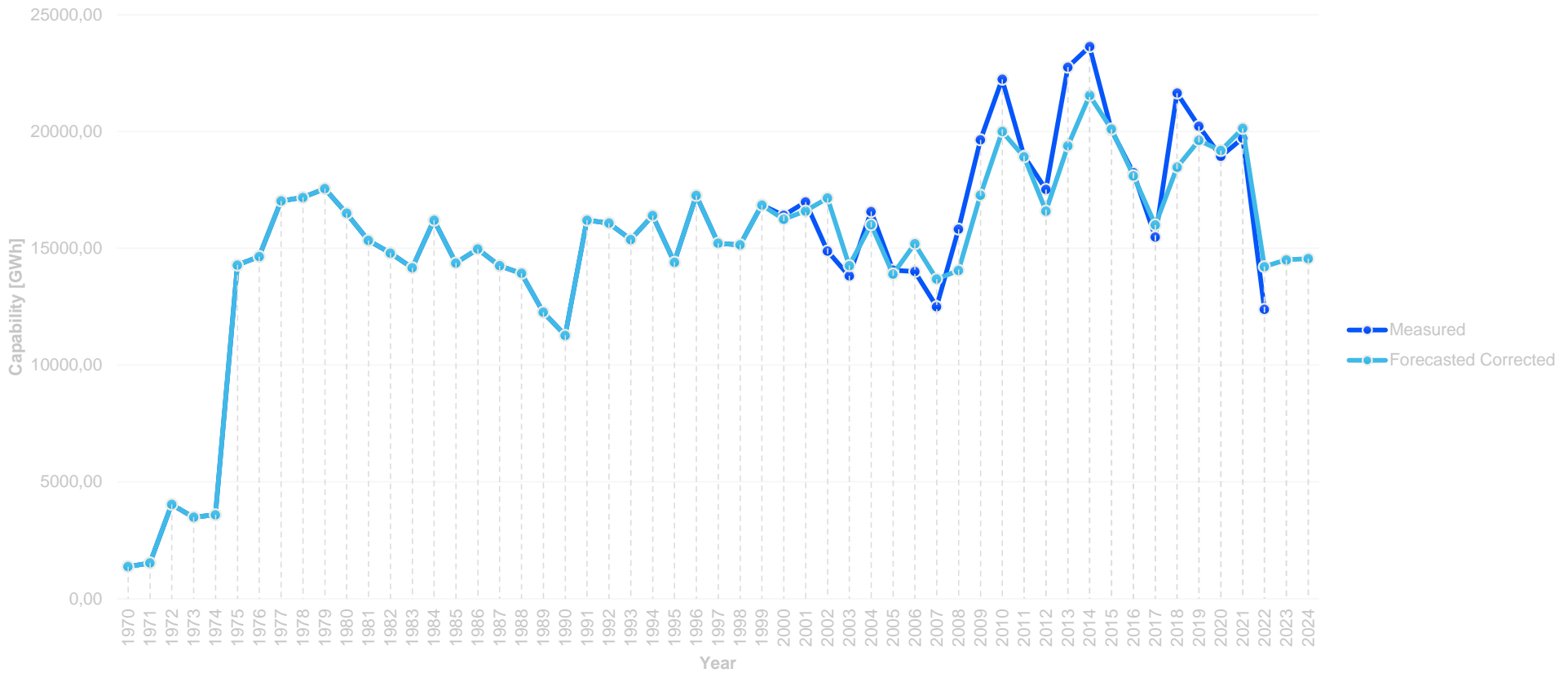


- Developed collecting full Capability data set from power plants starting from 1970 to 2022.
- Available forecasted Capability for each power plants (years after 2022).
- Following graphs display the whole forecasting model of Italian fleet.
- The first set of graph (slides #3 and #5) represents “raw” models.
- The second series (slides #4 and #6) show corrected graphs, considering a “seasonal” effect.
- Slides #7, #8 show updated versions of slide #4 / #6’s graphs with “best fitting seasonality” forecasting, based on historical data (1970-2022).
- Slide #9 reports the specific 2024’s Capability for each month.

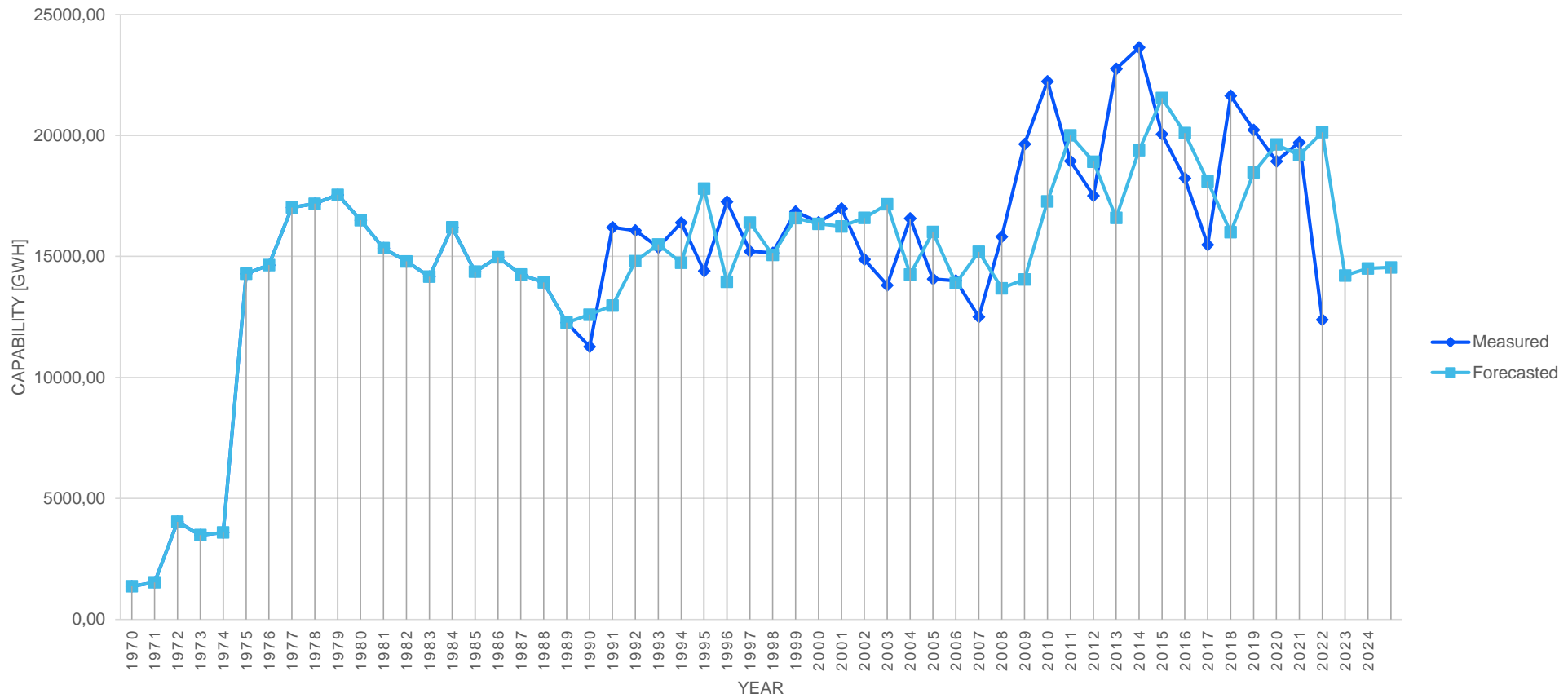
Hydro Capability model – Forecasting (2000-2024)



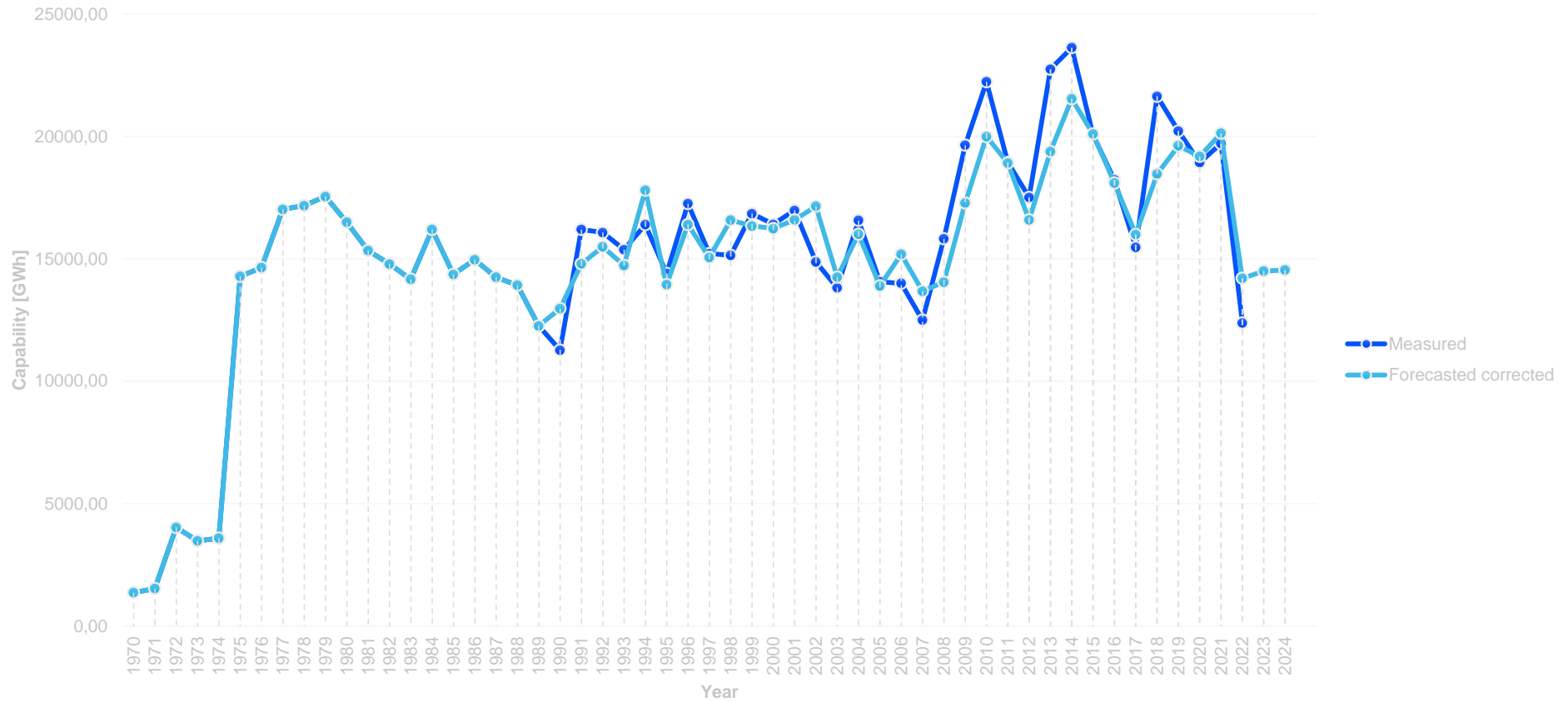
Hydro Capability model – Forecasting corrected (2000-2024)



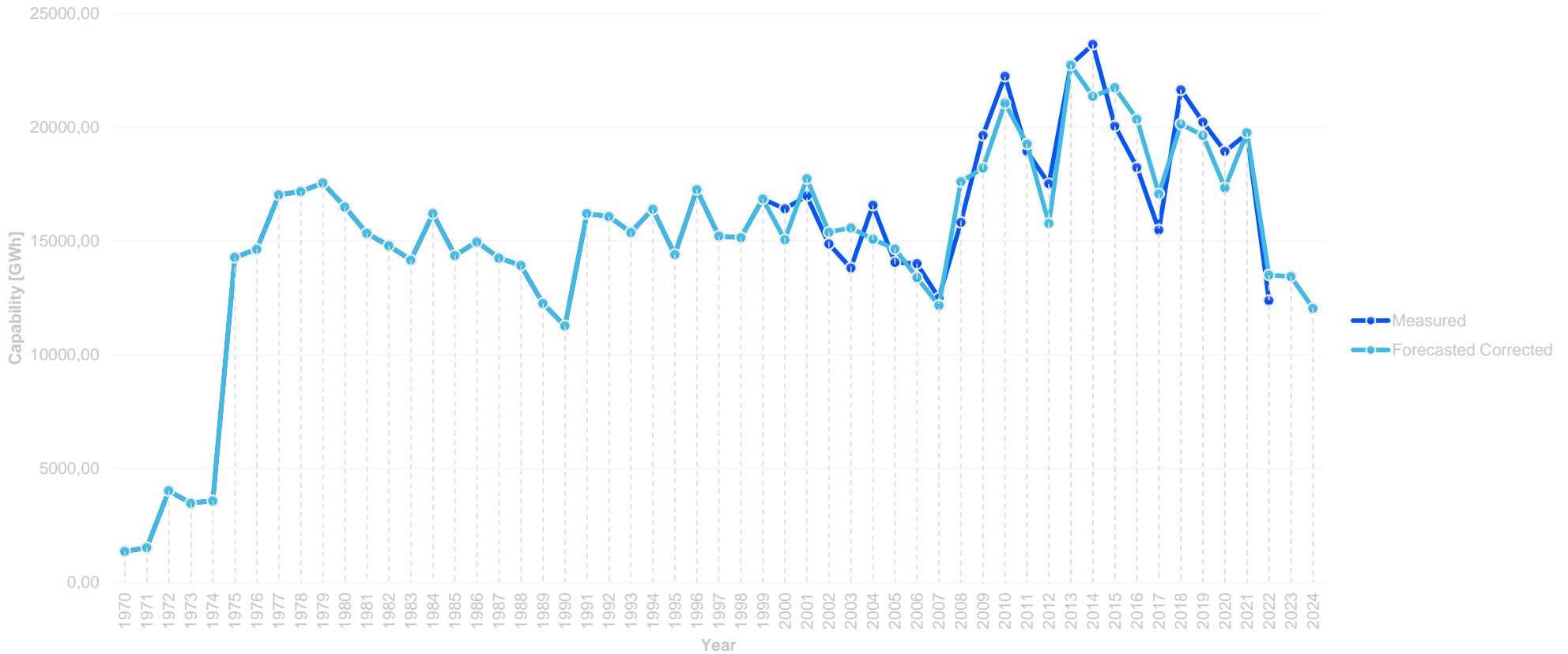
Hydro Capability model – Forecasting (1990-2024)



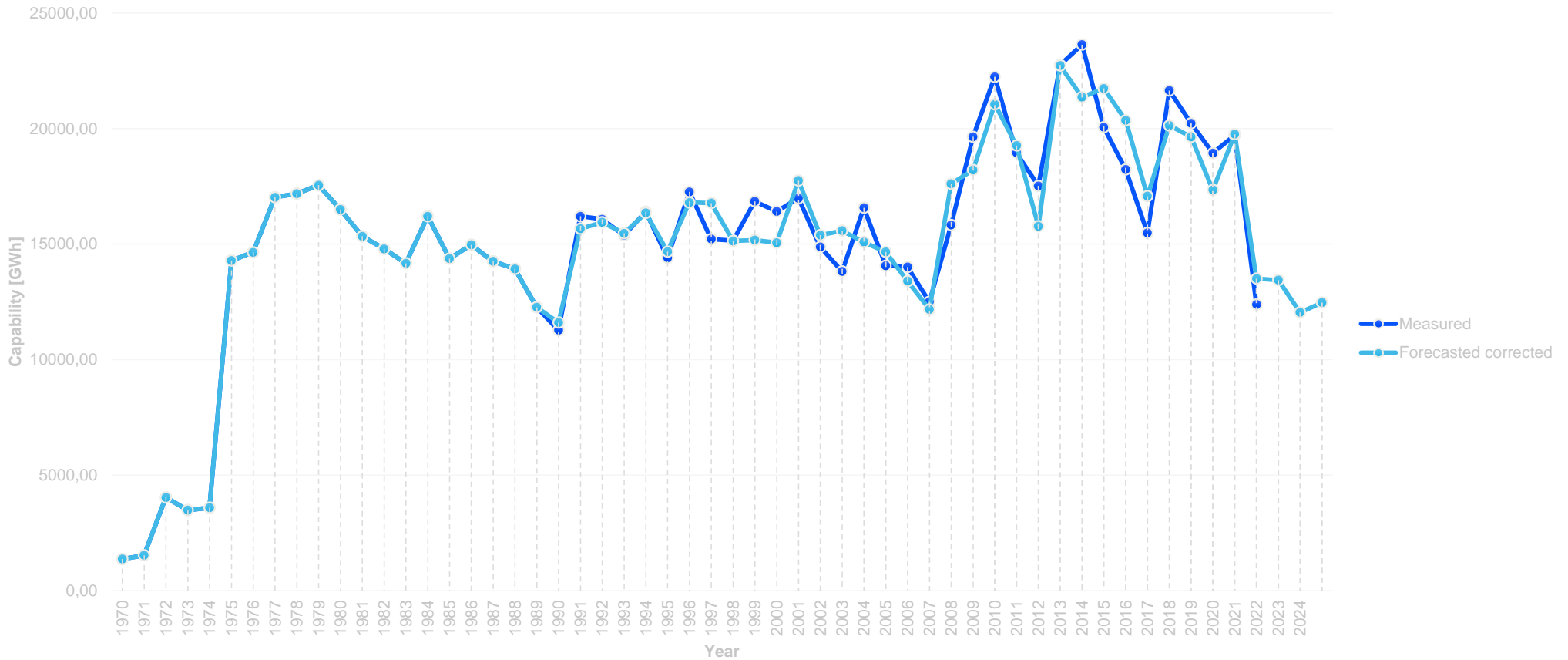
Hydro Capability model – Forecasting corrected (1990-2024)



Hydro Capability model – Forecasting corrected (2000-2024) – best fitting seasonality



Hydro Capability model – Forecasting corrected (1990-2024) – best fitting seasonality



Hydro Capability model – Monthly Forecasting 2024



Capability 2024

