

# ANALYSIS OF ACTUATOR STRUCTURE USING NEW ELECTRO-THERMO-MECHANICAL FINITE ELEMENT DERIVED FOR FUNCTIONALLY GRADED MATERIALS

JURAJ PAULECH<sup>1</sup>, JUSTÍN MURÍN<sup>1</sup>, MICHAL M. ULIČNÝ<sup>1</sup>, VLADIMÍR GOGA<sup>1</sup>,  
VLADIMÍR KUTIŠ<sup>1</sup>, GABRIEL GÁLIK<sup>1</sup>, TIBOR SEDLÁR<sup>1</sup>, ŠIMON BERTA<sup>1</sup> AND  
LADISLAV ŠARKÁN<sup>1</sup>

<sup>1</sup>Faculty of Electrical Engineering and Information Technology, Slovak University of Technology in  
Bratislava  
Ilkovičova 3, 812 19 Bratislava, Slovak Republic  
juraj.paulech@stuba.sk, <https://www.fei.stuba.sk/>

**Key words:** New Finite Element, Functionally Graded Materials, Multiphysical Analysis, Actuator

**Abstract.** *Functionally Graded Materials (FGMs) are new types of material where their properties vary spatially according to chosen function to reach such features that are unable to provide using standard materials or composites. Hence, a structure made of FGM can dispose for example with excellent thermal conductivity at one component part together with thermal insulating properties at another component part. Proposed paper deals with electro-thermo-mechanical analysis of chosen actuator structure made of FGM using new finite element derived specially for this purpose. Rectangular cross-section of individual beams that form the von Mises structure with variation of material properties in longitudinal and lateral direction will be considered. Actuator action, electric voltage and temperature peak and also mechanical stress of the structure will be evaluated. Results from the analysis calculated using our new FGM beam finite elements will be compared to results from conventional FEM analysis where standard finite elements will be used.*

## 1 INTRODUCTION

Actuator is a mechatronic system that transforms chosen type of energy into the mechanical displacement and mechanical force. These actuators can be made of traditionally materials (e.g. metals) but also of advanced materials such as Functionally Graded Materials (FGM). FGM is built as a mixture of two or more constituents and the variation of macroscopic material properties of the system can be induced by variation of both the volume fractions of the constituents and their material properties. Using such materials, the actuator can be simple shaped and its effectiveness, particularly for Micro-Electro-Mechanical Systems (MEMS), will be enhanced.

Classic shape of actuator (Figure 1a) can be replaced by new type – simply-shaped actuator (Figure 1b) where functionality is caused by varying material properties.



**Figure 1:** a) Classic shape of MEMS actuator, b) New shape of FGM actuator

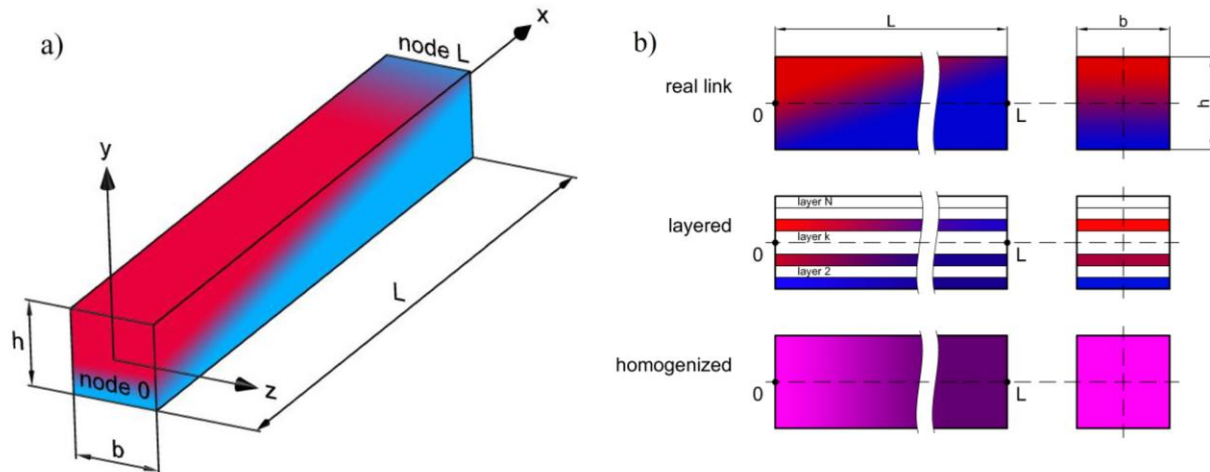
Functionality of the classic actuator is based on its shape that contains narrow parts of the actuator with higher resistance to reach higher electric heating of such parts, or to create mechanical joints that ensure simple bending of the actuator. New type of actuator made of FGM can be simple-shaped and above-mentioned functionality is ensured at material level where mixture of two material constituents is chosen such way to ensure change in material properties in given parts of the actuator and such to reach its proper (or even optimal) functionality.

Computer modelling and analysing of structures made of FGM can be performed in classical way (e. g. using computer tools based on Finite Element Method – FEM), where spatial change of material properties has to be included in the models that leads to relatively complicated models when considering fine change of material properties conditions.

Our approach for modelling and analysing of FGM structures is based on new link and beam finite elements derived for FGM, where whole parts of such structures are modelled using these new elements and the FEM model is relatively simple and easy to compute.

## 2 FEM EQUATIONS FOR COUPLED ELECTRO - THERMO - MECHANICAL ANALYSIS

Figure 2a presents simple link / beam FGM structure for which new FEM equations for coupled electro-thermo-mechanical analysis will be derived.



**Figure 2:** a) FGM 2-nodal link with its dimensions and illustrative change of material properties, b) homogenization process using multilayer method

Prior to the derivation process of the new FEM equations it is necessary to implement homogenization techniques (extended mixture rule [1] and multilayer method [2, 3]) that convert spatial change of material properties (caused by chosen mixture of the constituents)

into equivalent one-dimensional change of material properties for each link or beam of the FGM actuator structure. This 1D change of effective material properties is only in longitudinal direction ( $x$  axis) of the link / beam, Figure 2b.

Derivation process for electro-thermo-mechanical element is based on differential equations for electric, thermal and structural fields for 1D type of analysis, respectively. Because of semi-analytical method used in the derivation process [4] all quantities in following equations are the polynomial functions of  $x$ .

## 2.1 Differential equations

Homogeneous 1D static differential equation for FGM (with non-constant coefficients on the left-hand side) for electric field with boundary conditions has a form:

$$-\sigma(x) \frac{d^2 \varphi(x)}{dx^2} - \frac{d\sigma(x)}{dx} \frac{d\varphi(x)}{dx} = 0 \quad (1)$$

$$\varphi(0) = \varphi_0 \quad J(L) = J_L$$

where  $x$  [m] is the longitudinal coordinate,  $\varphi(x)$  [V] is the electric potential,  $\sigma(x)$  [S/m] is the specific electric conductivity and  $J(x)$  [Am<sup>-2</sup>] is the current density.

Static differential equation for heat transfer with non-constant auxiliary thermal source  $Q(x)$  [Wm<sup>-3</sup>] in the volume of the link, with non-constant convective heat transfer coefficient  $\alpha(x)$  [Wm<sup>-2</sup>K<sup>-1</sup>] from the link surface and coupled to the electric field, has a form (2). One-way coupling between the electric and thermal field is provided by Joule heat  $P_{J1}(x)$  [Wm<sup>-3</sup>], that can be calculated as one of the outputs from electric analysis and it enters the thermal analysis as volume heat (beside or instead of  $Q(x)$ ).

$$-\lambda(x) \frac{d^2 T(x)}{dx^2} - \frac{d\lambda(x)}{dx} \frac{dT(x)}{dx} + \alpha(x) T(x) \frac{o}{A} = P_{J1}(x) + Q(x) + \alpha(x) T_{amb} \frac{o}{A} \quad (2)$$

with boundary conditions, e.g.:

$$T(0) = T_0 \quad q(L) = q_L \quad (3)$$

where  $\lambda(x)$  [Wm<sup>-1</sup>K<sup>-1</sup>] is the thermal conductivity,  $T(x)$  [K] is the temperature,  $o$  [m] is the link perimeter,  $A$  [m<sup>2</sup>] is its cross section area,  $T_{amb}$  [K] is the ambient temperature and  $q(x)$  [Wm<sup>-2</sup>] is the heat flux.

Homogeneous differential equation for structural analysis with effect of thermal expansion (coupling with the electro-thermal analysis) for pure tensile and compressive stress, has a form:

$$E_N^H(x) \frac{d^2 u(x)}{dx^2} + \frac{dE_N^H(x)}{dx} \frac{du(x)}{dx} =$$

$$= \frac{n(x)}{A} + \alpha_t(x) \Delta T(x) \frac{dE_N^H(x)}{dx} + \Delta T(x) E_N^H(x) \frac{d\alpha_t(x)}{dx} + E_N^H(x) \alpha_t(x) \frac{d\Delta T(x)}{dx} \quad (4)$$

with boundary conditions, e.g.:

$$u(0) = u_0 \quad \sigma_N^S(L) = \sigma_{N,L}^S \quad (5)$$

where  $E_N^H(x)$  [Pa] is homogenized Young modulus for tension/compression,  $u(x)$  [m] is the displacement,  $n(x)$  [Nm<sup>-1</sup>] are the distributed axial forces,  $\alpha_t$  [K<sup>-1</sup>] is the coefficient of thermal expansion and  $\sigma_N^S(x)$  [Pa] is the structural normal stress.

Homogeneous differential equation for structural analysis for bending has a form:

$$\frac{d^2 w(x)}{dx^2} = -\frac{M(x)}{E_M^H(x)I_y} \quad (6)$$

with boundary conditions, e.g.:

$$w(0) = w_0 \quad \varphi_y(L) = \varphi_{y,L} \quad (7)$$

where  $w(x)$  [m] is the transversal displacement,  $M(x)$  [Nm] is the bending moment,  $E_M^H(x)$  is homogenized Young modulus for bending,  $\varphi_y(x)$  [rad] is the angle of the cross section rotation,  $I_y$  [m<sup>4</sup>] is the quadratic moment of the cross section, see Figure 3 ( $N$  and  $T_z$  are the normal and transversal forces, respectively).

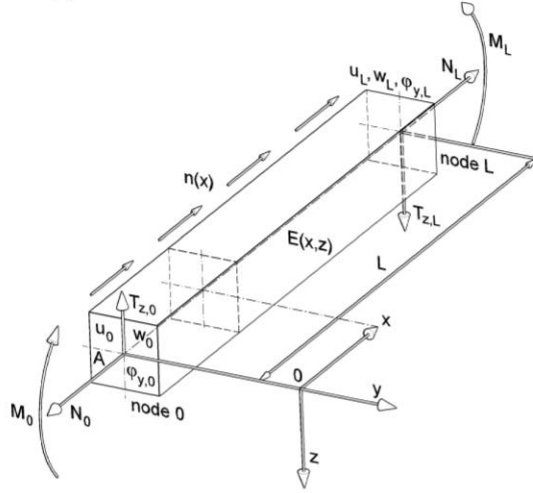


Figure 3: For derivation process for structural analysis

The solution of above-mentioned differential equations is based on numerical method for solving 1D differential equation with non-constant coefficients and with right-hand side described in [4] in detail.

## 2.2 New beam/link FGM finite element equations

The finite element equations for electric analysis in FGM link have a form:

$$\begin{bmatrix} c_0(L) & -1 \\ -\left(c_0(L) - \frac{c_1(L)c'_0(L)}{c'_1(L)}\right) & 1 \end{bmatrix} \cdot \begin{bmatrix} \varphi_0 \\ \varphi_L \end{bmatrix} = \begin{bmatrix} \frac{c_1(L)}{\sigma_0} J_0 \\ \frac{c_1(L)}{c'_1(L)\sigma_L} J_L \end{bmatrix} \quad (8)$$

FEM equations for thermal analysis considering the convective effect, generated heat and Joule heat have a form:

$$\begin{bmatrix} c_0(L) & -1 \\ -\left(c_0(L) - \frac{c_1(L)c'_0(L)}{c'_1(L)}\right) & 1 \end{bmatrix} \cdot \begin{bmatrix} T_0 \\ T_L \end{bmatrix} = \begin{bmatrix} \frac{c_1(L)}{\lambda_0} q_0 - \sum_{j=0}^g \epsilon_j b_{j+2}(L) \\ \frac{c_1(L)}{c'_1(L)\lambda_L} q_L - \frac{c_1(L)}{c'_1(L)} \sum_{j=0}^g \epsilon_j b'_{j+2}(L) + \sum_{j=0}^g \epsilon_j b_{j+2}(L) \end{bmatrix} \quad (9)$$

Derived FEM equations for the structural analysis for pure tensile and compressive stress with coupling to the electro-thermal analysis have a form:

$$\begin{bmatrix} c_0(L) & -1 \\ -\left(c_0(L) - \frac{c_1(L)c'_0(L)}{c'_1(L)}\right) & 1 \end{bmatrix} \cdot \begin{bmatrix} u_0 \\ u_L \end{bmatrix} = \begin{bmatrix} \frac{c_1(L)}{E_N^H A} N_0 - c_1(L)\alpha_{t,0}\Delta T_0 - \sum_{j=0}^g \epsilon_j b_{j+2}(L) \\ \frac{c_1(L)}{c'_1(L)} \left( \frac{N_L}{E_N^H A} + \alpha_{t,L}\Delta T_L - \sum_{j=0}^g \epsilon_j b'_{j+2}(L) \right) + \sum_{j=0}^g \epsilon_j b_{j+2}(L) \end{bmatrix} \quad (10)$$

and FEM equations for bending of the beam have general form:

$$\begin{bmatrix} K_{11} & K_{12} & K_{13} & K_{14} \\ K_{21} & K_{22} & K_{23} & K_{24} \\ K_{31} & K_{32} & K_{33} & K_{34} \\ K_{41} & K_{42} & K_{43} & K_{44} \end{bmatrix} \cdot \begin{bmatrix} w_0 \\ \varphi_{y,0} \\ w_L \\ \varphi_{y,L} \end{bmatrix} = \begin{bmatrix} T_{z,0} \\ M_0 \\ T_{z,L} \\ M_L \end{bmatrix} \quad (11)$$

The terms  $c_i(x)$ ,  $c'_i(x)$ ,  $b_i(x)$ ,  $b'_i(x)$ , are the transfer functions and their derivatives (for uniform solution and for particular solution) of the differential equations (1) - (7) which can be calculated by simple numerical algorithm [4]. The term  $\epsilon_j$  is the  $j^{\text{th}}$  coefficient of the polynomial of grade  $g$ . The members  $K_{ij}$  are substituents for combination of the transfer functions for particular  $x$  position within the beam element (i.e. transfer constants). For example:

$$K_{12} = \frac{c_1(L)b'_2(L) - b_2(L)c'_1(L)}{b_2(L)b'_3(L) - b_3(L)b'_2(L)} \quad (12)$$

### 3 NUMERICAL EXPERIMENT

Let us consider actuator with constant cross section made of FGM according to Figure 4. It consists of 3 parts (beams) that lengths are:  $L_1 = 10$  mm,  $L_2 = 0.3$  mm and  $L_3 = 10$  mm. Their constant rectangular cross-section is  $b = 0.2$  mm and  $h = 0.1$  mm.

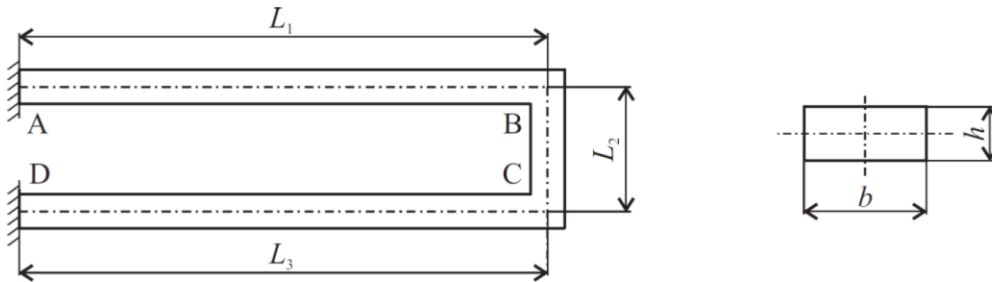
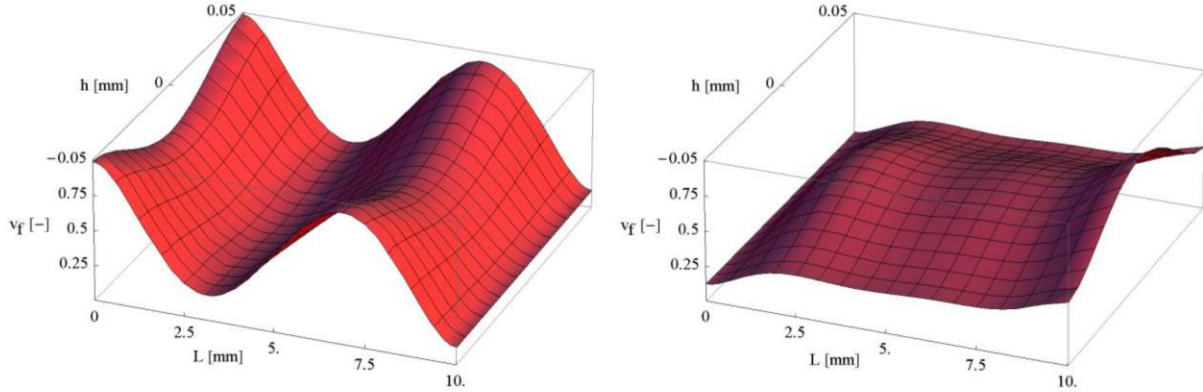


Figure 4: FGM actuator

Actuator is made of FGM that consist of two components: matrix denoted with index  $m$  and fibre denoted with index  $f$ . Material properties of the components are constant (not temperature dependent), Matrix: Young modulus  $E_m = 211$  GPa, thermal conductivity  $\lambda_m = 80.4$  Wm $^{-1}$ K $^{-1}$ , electric conductivity  $\sigma_m = 1 \times 10^7$  Sm $^{-1}$ , thermal expansion coefficient  $\alpha_{tm} = 2.18 \times 10^{-5}$  K $^{-1}$ ; Fibre: Young modulus  $E_f = 119$  GPa, thermal conductivity  $\lambda_f = 401$  Wm $^{-1}$ K $^{-1}$ , electric conductivity  $\sigma_f = 5.96 \times 10^7$  Sm $^{-1}$ , thermal expansion coefficient  $\alpha_{tf} = 1.65 \times 10^{-5}$  K $^{-1}$ . The variation of material properties is caused by varying volume fraction.

Variation of the fibre's volume fraction has been chosen as the polynomial function of longitudinal ( $L$ ) and lateral ( $h$ ) directions of individual beams. Coordinates for these directions are denoted  $x$  and  $y$  for the variation of material properties. Through the depth  $b$  of the beams the material properties are constant and they are derived from the variation in longitudinal and lateral directions.

Variation of the fibres volume fraction  $v_f(x, y)$  for the first (from point A to B, see Figure 4) and third beam (from point C to D) are shown in Figure 5. The constant fibres volume fraction with value  $v_f(x, y) = 0.125$  for the second beam (from point B to C) is considered.

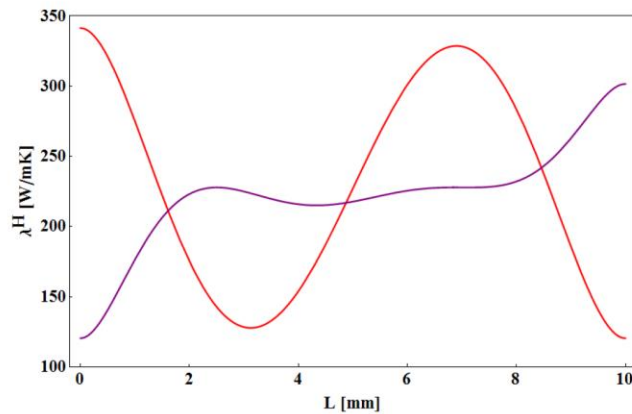


**Figure 5:** Variation of the fibres volume fraction, left – 1<sup>st</sup> beam, right – 3<sup>rd</sup> beam

The effective material properties (Young modulus for tension/compression  $E_N^H(x)$ , Young modulus for bending  $E_M^H(x)$ , thermal conductivity  $\lambda^H(x)$ , electric conductivity  $\sigma^H(x)$ , thermal expansion coefficient  $\alpha_t^H$ ) of the homogenized beam have been calculated by multilayered method [2, 3]. An example of the results for the first beam is:

$$\begin{aligned}\sigma^H(x) &= 5.04 \times 10^7 - 1.54 \times 10^{13}x^2 + 5.79 \times 10^{15}x^3 - 7.14 \times 10^{17}x^4 + 2.85 \times 10^{19}x^5 \\ \lambda^H(x) &= 341.4 - 9.94 \times 10^7x^2 + 3.74 \times 10^{10}x^3 - 4.62 \times 10^{12}x^4 + 1.84 \times 10^{14}x^5 \\ E_N^H(x) &= 1.36 \times 10^{11} + 2.85 \times 10^{16}x^2 - 1.07 \times 10^{19}x^3 + 1.32 \times 10^{21}x^4 - 5.29 \times 10^{22}x^5 \\ E_M^H(x) &= 1.27 \times 10^{11} + 3.21 \times 10^{16}x^2 - 1.21 \times 10^{19}x^3 + 1.49 \times 10^{21}x^4 - 5.96 \times 10^{22}x^5 \\ \alpha_t^H(x) &= 1.80 \times 10^{-5} + 3.71 \times 10^{-4}x - 1.32x^2 - 528.9x^3 + 66742x^4 - 2.70 \times 10^6x^5\end{aligned}$$

The homogenized thermal conductivity  $\lambda^H(x)$  for the first and third beam is shown in Figure 6.

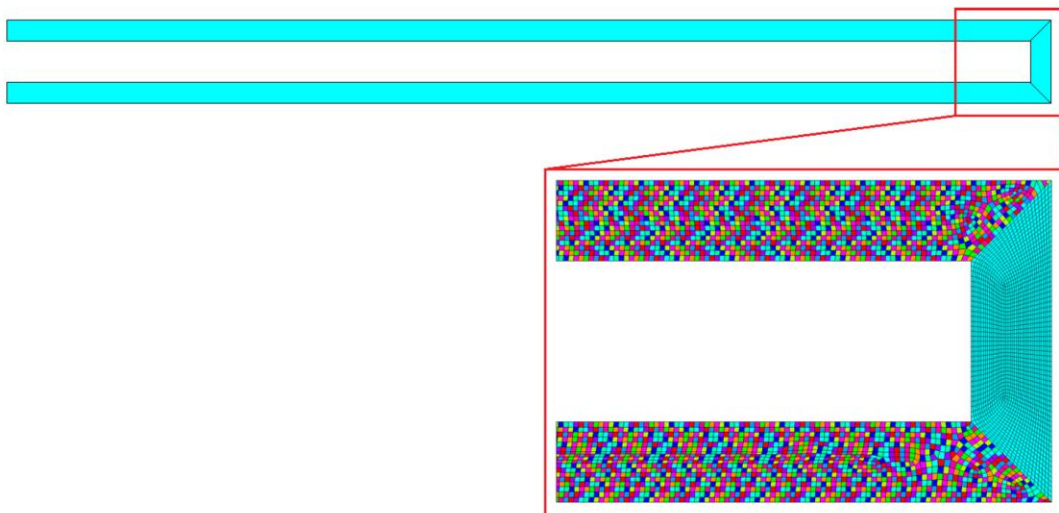


**Figure 6:** Homogenized thermal conductivity, red – 1<sup>st</sup> beam, purple – 3<sup>rd</sup> beam

The applied constraints and loads are:

- electric potential and current:  $\varphi_A = 0$  V,  $I_D = 2$  A;
- temperatures:  $T_A = 25$  °C,  $T_D = 25$  °C;
- fixed support:  $u_A = 0$  m,  $u_D = 0$  m,  
 $w_A = 0$  m,  $w_D = 0$  m,  
 $\varphi_{y,A} = 0$  rad,  $\varphi_{y,D} = 0$  rad

The coupled electro-thermo-mechanical analysis of FGM actuator has been done using our new FGM beam/link finite elements. The calculation has been done using software MATHEMATICA. Only three our new finite elements have been used (one for each part). The same problem has been solved using a fine mesh – 51 600 of PLANE223 elements of the FEM program ANSYS (see Figure 7). The average relative difference  $\Delta$  [%] between quantities calculated by our method and the ANSYS solution has been evaluated.



**Figure 7:** Elements of the FGM actuator in ANSYS, the first and third beam are made of FGM, the second beam has constant material properties

Electric analysis was performed as the first solution and the nodal electric variables have been obtained (see Table 1).

**Table 1:** The results of electric analysis

electric potential [V]	new element	ANSYS	$\Delta$ [%]
$\varphi_B$	0.0346	0.0345	0.29
$\varphi_C$	0.0364	0.0360	1.11
$\varphi_D$	0.0690	0.0684	0.88

Thermal analysis was performed as the second one. Distributed thermal load – Joule heat caused by electric current was included into the analysis. The results of thermal analysis are presented in Table 2.

**Table 2:** The results of thermal analysis

temperature [°C]	new element	ANSYS	$\Delta$ [%]
$T_B$	110.06	108.50	1.44
$T_C$	109.83	108.32	1.39

Structural analysis was performed as the last analysis, where thermal forces caused by thermal expansion were included into the model. The results of structural analysis are the displacements  $u$  for longitudinal direction and  $w$  for transversal direction (see Table 3).

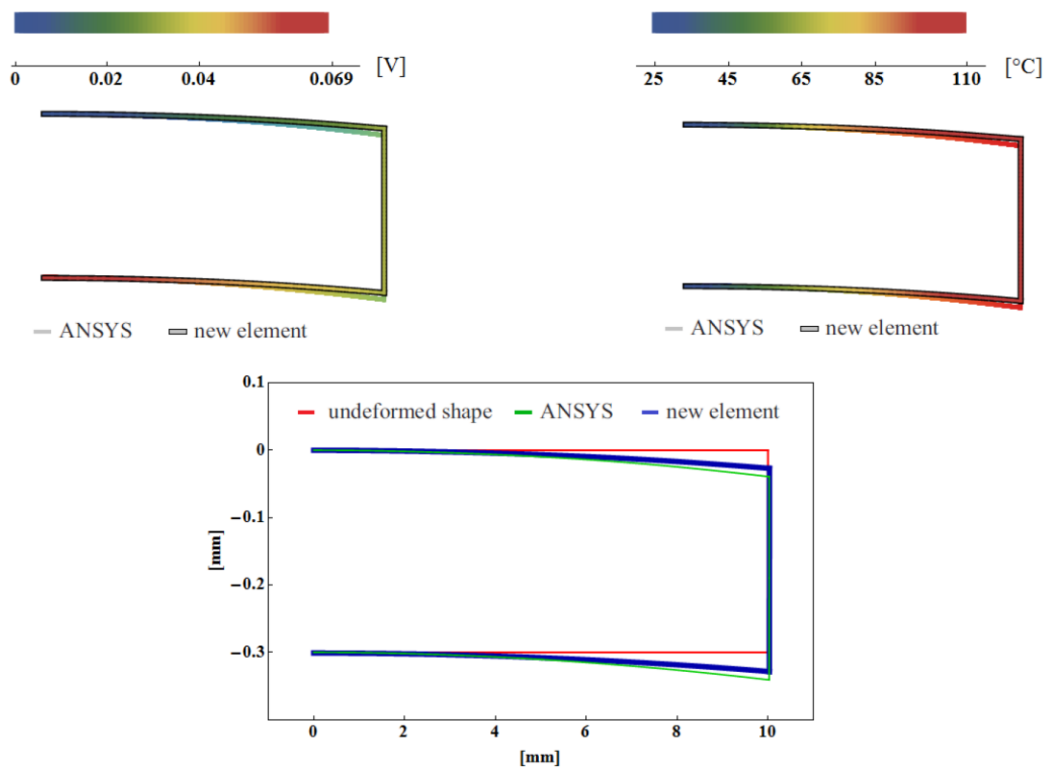
**Table 3:** The results of structural analysis

displacement [mm]	new element	ANSYS	$\Delta$ [%]
$u_B$	0.0112	0.0098	14.28
$w_B$	0.0090	0.0131	-31.30
$u_C$	0.0107	0.0090	18.89
$w_C$	0.0095	0.0136	-30.15

As it can be seen from Tables 1 - 3, there are considerable differences between results obtained by our new element and FEM program ANSYS especially for structural analysis that is based on the results from preliminary analyses (e.g. thermal and electric analyses). This is caused by the fact that junctions B and C (see Figure 4) are not spot junctions (considered in the beam theory) but they are spatial junctions in reality (see Figure 7), so the current and heat flow in these junctions are not strictly 1D flows as it is considered in the beam theory.

The comparison of total deformation, temperature distribution and electric potential distribution of the FGM actuator calculated by our new approach and commercial FEM program ANSYS is shown in Figure 8.





**Figure 8:** Results of electro-thermo-mechanical analysis, top left – electric potential, top right – temperature, bottom – displacement (displacement scaling 3:1)

## 4 CONCLUSIONS

New FEM equations for weak coupled static electro-thermo-mechanical analysis of the FGM beam structures have been presented in this contribution. The numerical experiment – multiphysical analysis of actuator made of FGM has been done using our new approach and obtained results have been compared with ones obtained by solution with commercial software.

## ACKNOWLEDGEMENT

This work was supported by the Slovak Research and Development Agency under the contract No. APVV-19-0406, by Grant Agency VEGA, grant No. 1/0416/21 and by Grant Agency KEGA, grant No. 011STU-4/2020.

## REFERENCES

- [1] Murin, J., Kutíš, V. *Improved mixture rules for composite (FGMs) sandwich beam finite element*. In: Computational Plasticity IX. Fundamentals and Applications. Barcelona, Spain, (2007): 647-650.
- [2] Kutíš, V., J. Murin, J., Belak, R. and Paulech, J. *Beam element with spatial variation of material properties for multiphysics analysis of functionally graded materials*. Computers and Structures, Vol. 89, (2011).
- [3] Murin, J., Kutíš, V., Paulech, J. and Hrabovský, J. *Electric-Thermal Link Finite Element Made of a FGM with Spatial Variation of Material Properties*. Composites Part B: